

QUY70

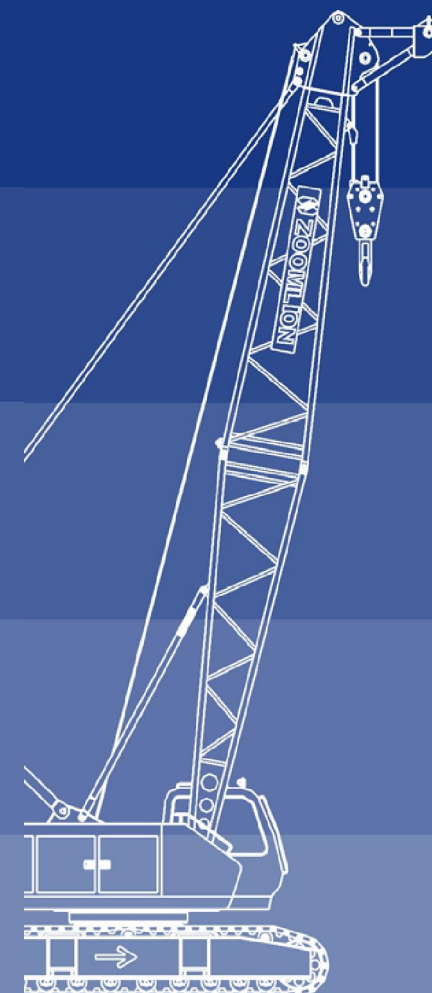
Crawler Crane Technical Manual



Add: No. 613, 3rd section of Middle Fu Rong Rd Changsha City, Hunan Province, China
Tel: +86-731-5667238
Fax: +86-731-5662997
E-mail: hotline-crane@zoomlion.com
PC: 410007

2009 © Copyright by Zoomlion Heavy Industry Science & Technology. We reserve the right to make improvements and changes to our products without notice. If there are any differences between technical parameters given in the manual and product delivered for you, please refer to the product.

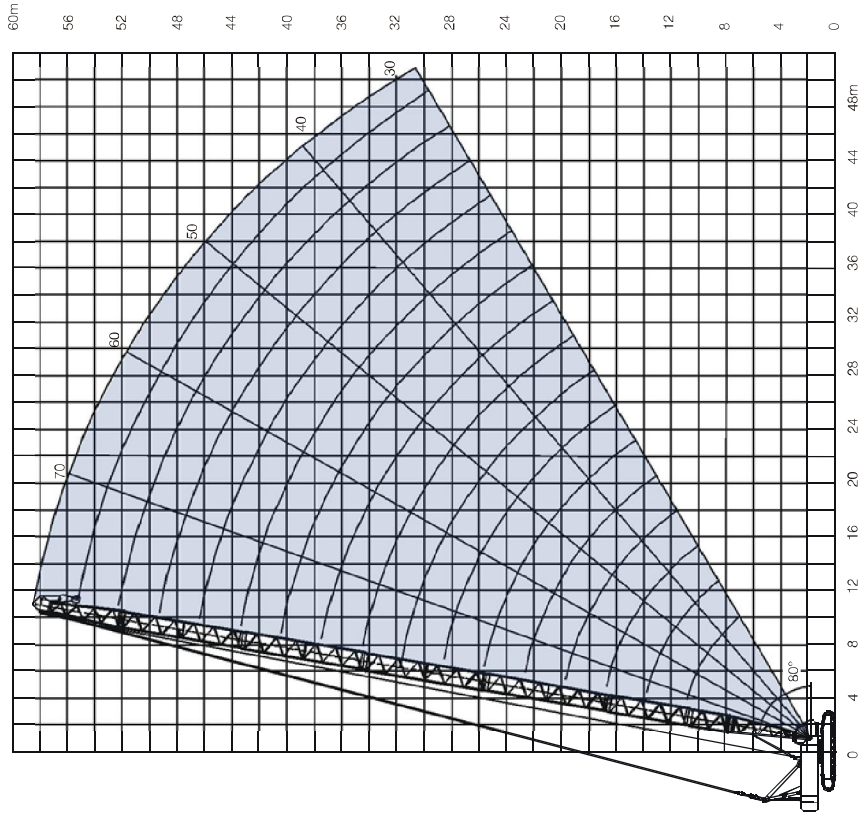
www.zoomlion.com



IV. Lifting capacity

10. Lifting performance on S boom

Lifting height on S boom



Lifting capacity on S boom(1)

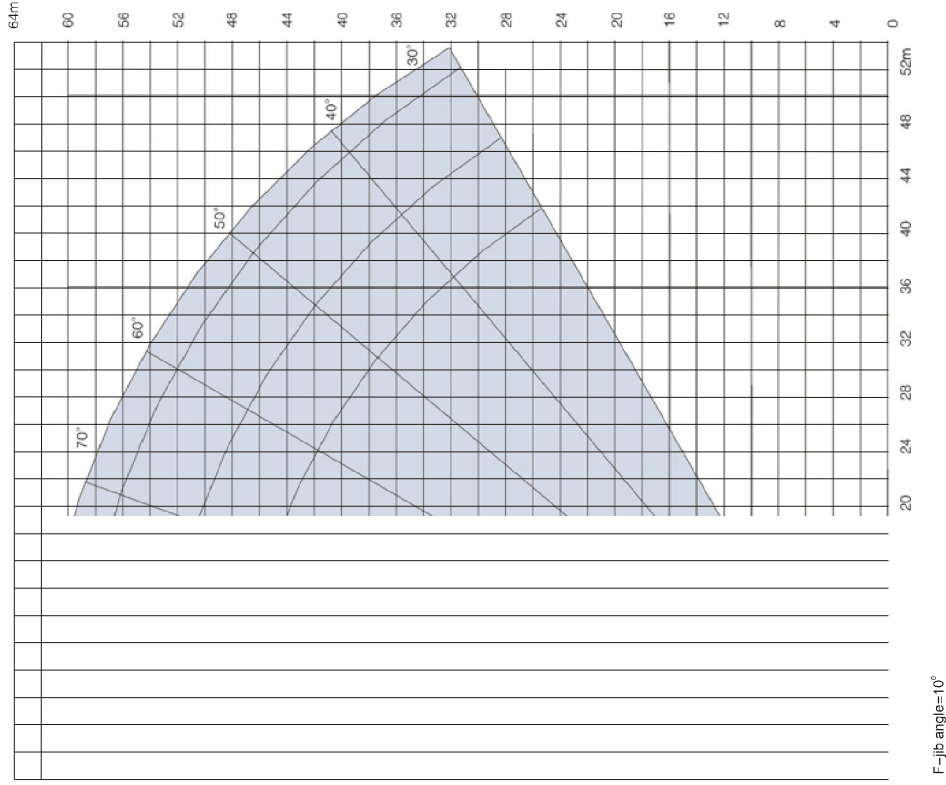
Length of S(m) Reaching (m) ¹⁾	12	15	18	21	24	27	30	33
	3.8	70						
4	65	56.2/4.1	51.2/4.6					
5	53.6	52.3	51	49.8	44.2/5.2	37/5.7		
6	40.5	40.1	39.3	38.5	37.7	36.9	34/6.2	30.4/6.7
7	32.1	32	31.8	31.2	30.6	30.1	29.5	28.9
8	26.6	26.5	26.4	26.2	25.8	25.3	24.8	24.3
9	22.6	22.5	22.4	22.3	22.2	21.8	21.4	21
10	19.7	19.5	19.4	19.3	19.2	19.1	18.7	18.4
12		15.4	15.3	15.1	15	14.9	14.8	14.6
14		12.6	12.5	12.4	12.2	12.1	12	11.9
16			10.5	10.4	10.2	10.1	10	9.9
19				8.3	8.1	8	7.9	7.8
20					7.6	7.5	7.3	7.2
22					6.7	6.5	6.4	6.3
24						5.8	5.7	5.5
26							5	4.9
28								4.4
29								4.1

11. Lifting performance on SF boom

Lifting capacity on S boom(2)

Length of S(m) Receiving Radius (m)	36	39	42	45	48	51	54	57
	7	27.1/7.3	24.3/7.8					
8	23.9	23.4	21.9/8.3	19.9/8.8				
9	20.6	20.2	19.8	19.4	18.1/9.3	14.6/9.9		
10	18	17.7	17.3	17	16.6	14.6	14.6/10.4	13.7/10.9
12	14.3	14	13.7	13.5	13.2	13.3	13.1	12.8
14	11.7	11.5	11.3	11	10.8	10.9	10.7	10.5
16	9.8	9.6	9.5	9.2	9	9.1	8.9	8.7
19	7.6	7.5	7.4	7.3	7.7	7	6.9	6.8
20	7.1	7	6.8	6.7	7.1	6.5	6.3	6.2
22	6.2	6	5.9	5.8	6.6	5.5	5.4	5.3
24	5.4	5.3	5.1	5	5.7	4.8	4.6	4.5
26	4.8	4.6	4.5	4.4	4.9	4.1	4	3.9
28	4.2	4.1	4	3.9	4.3	3.6	3.5	3.3
29	4	3.9	3.7	3.6	3.7	3.4	3.2	3.1
30	3.8	3.6	3.5	3.4	3.5	3.1	3	2.9
32	3.4	3.2	3.1	3	3.3	2.7	2.6	2.5
34		2.9	2.8	2.6	2.9	2.4	2.3	2.1
36			2.5	2.3	2.5	2.1	1.9	1.8
37			2.3	2.2	2.2	1.9	1.8	1.7
38				2.1	2.1	1.8	1.7	1.5
39				1.9	1.9	1.7	1.5	1.4
40					1.8	1.6	1.4	1.3
42					1.7	1.3	1.2	1.1

Lifting height on SF boom(1)



F-jib angle=10°

- Note:
1. The lifting capacity given in the above chart contains the weight of load hook and weight of wire rope between boom head and load hook.
 2. When tip boom is used to lift the load, the lifting capacity on tip boom is the same as that on main boom of same length in the same working radius.

Lifting height on SF boom (2)

Lifting capacity on SF boom(1)

Length of S (m)	30						33					
	6		12		18		6		12		18	
	10°	30°	10°	30°	10°	30°	10°	30°	10°	30°	10°	30°
8	6.4/8.3						6.4/8.8					
10	6.4	6.4/10.1	6.4/10.3				6.4	6.4/10.6	6.4/10.8			
12	6.4	6.4	6.4	6.4/13.9	5.0/12.4		6.4	6.4	6.4	4.9/12.9		
14	6.4	6.4	6.4	4.8	4.8		6.4	6.4	6.4/14.4	4.9		
16	6.4	6.4	6.4	6.4	4.8	4.5/17.8	6.4	6.4	6.4	6.4	4.8	
18	6.4	6.4	6.4	6.4	4.7	4.5	6.4	6.4	6.4	6.4	4.8	4.4/18.3
20	6.4	6.4	6.4	6.4	4.6	4.3	6.4	6.4	6.4	6.4	4.6	4.3
22	6.4	6.4	6.4	6.4	4.5	4.3	6.3	6.3	6.4	6.4	4.5	4.3
24	5.6	5.6	5.9	5.9	4.5	4.3	5.5	5.5	5.8	5.8	4.5	4.3
26	4.9	4.9	5.2	5.2	4.4	4.2	4.8	4.8	4.8	5	4.5	4.2
28	4.4	4.4	4.6	4.6	4.4	4.2	4.3	4.3	4.3	4.4	4.4	4.2
30	3.9	3.9	4.1	4.1	4.2	4.2	3.8	3.8	3.8	3.9	4.0	4.2
32	3.5	3.5	3.7	3.7	3.6	3.9	3.4	3.4	3.4	3.5	3.6	3.8
34			3.3	3.3	3.4	3.5	3.0	3.0	3.0	3.2	3.2	3.4
36			3	3	3.1	3.1	2.6	2.6	2.6	2.9	2.9	3.0
38			2.6	2.6	2.8	2.8				2.5	2.5	2.7
40					2.5	2.5				2.3	2.3	2.4
42					2.3	2.3				2.0	2.0	2.2
44					2.0	2.0				1.9	1.9	1.9

Lifting capacity on SF boom(2)

Length of S (m)	36						39					
	6		12		18		8		12		16	
	10°	30°	10°	30°	10°	30°	10°	30°	10°	30°	10°	30°
8	6.4/9.3						6.4/9.8		6.4/11.9			
10	6.4	6.4/11.1	6.4/11.4				6.4	6.4/11.6	6.4			
12	6.4	6.4	6.4		4.9/13.4		6.4	6.4	6.4		4.9/13.9	
14	6.4	6.4	6.4	6.4/15	4.9		6.4	6.4	6.4	6.4/15.5	4.9	
16	6.4	6.4	6.4	6.4	4.8		6.4	6.4	6.4	6.4	4.8	
18	6.4	6.4	6.4	6.4	4.8	4.5/16.8	6.4	6.4	6.4	6.4	4.8	4.5/19.3
20	6.4	6.4	6.4	6.4	4.7	4.4	6.4	6.4	6.4	6.4	4.7	4.5
22	6.1	6.2	6.3	6.4	4.5	4.3	6	6.1	6.2	6.4	4.6	4.3
24	5.3	5.4	5.5	5.7	4.5	4.3	5.2	5.3	5.4	5.6	4.6	4.3
26	4.7	4.7	4.9	5.0	4.5	4.3	4.6	4.6	4.7	4.9	4.5	4.3
28	4.1	4.1	4.3	4.4	4.3	4.2	4	4.0	4.2	4.3	4.2	4.2
30	3.7	3.7	3.8	3.9	3.9	4.1	3.5	3.5	3.7	3.8	3.6	4.0
32	3.2	3.2	3.4	3.5	3.5	3.7	3.1	3.1	3.3	3.4	3.4	3.6
34	2.9	2.9	3	3.1	3.1	3.3	2.8	2.8	2.9	3.0	3	3.2
36	2.5	2.5	2.7	2.8	2.8	2.9	2.4	2.4	2.6	2.6	2.7	2.8
38	2.2	2.2	2.4	2.4	2.5	2.6	2.1	2.1	2.3	2.3	2.4	2.5
40		2.2	2.2	2.3	2.3	2.3	1.9	1.9	2.1	2.1	2.1	2.2
42		2	2	2	2	2.1	1.6	1.6	1.8	1.8	1.9	2.0
44		1.7	1.7	1.8	1.8	1.8			1.6	1.6	1.7	1.8
46					1.6	1.6			1.4	1.4	1.5	1.5
48					1.4	1.4					1.3	1.3
50					1.2	1.2					1.2	1.2
52											1	1.0

Lifting capacity on SF boom(3)

Length of S (m)	42						48					
	6		12		18		6		12		18	
	10°	30°	10°	30°	10°	30°	10°	30°	10°	30°	10°	30°
10	6.4/10.3											
12	6.4	6.4/12.2	6.4/12.4									
14	6.4	6.4	6.4		4.9/14.4							
16	6.4	6.4	6.4	6.4	4.9							
18	6.4	6.4	6.4	6.4	4.8						4.5/19.9	
20	6.4	6.4	6.4	6.4	4.7						4.7	4.5
22	5.9	6.1	6.1	6.1	6.3						4.7	4.3
24	5.1	5.2	5.3	5.3	5.5						4.6	4.3
26	4.4	4.5	4.6	4.6	4.8						4.6	4.3
28	3.9	4	4.1	4.1	4.2						4.2	4.3
30	3.4	3.4	3.6	3.6	3.7						3.7	3.9
32	3	3.0	3.2	3.2	3.3						3.3	3.3
34	2.6	2.6	2.8	2.8	2.9						2.9	3.1
36	2.3	2.3	2.5	2.5	2.5						2.6	2.7
38	2.1	2.0	2.2	2.2	2.2						2.3	2.4
40	1.8	1.8	1.9	1.9	2.0						2	2.1
42	1.5	1.5	1.7	1.7	1.7						1.8	1.9
44	1.3	1.3	1.5	1.5	1.5						1.6	1.7
46					1.3						1.4	1.4
48					1.1						1.1	1.2
50											1.1	1.1
52											0.9	0.9
54											0.8	0.8